

# Concerti a Cinque

## Concerto II

### Violoncello

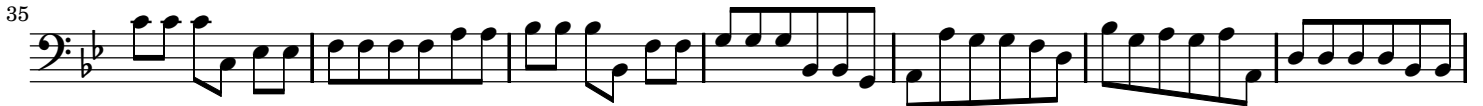
Tomaso Albinoni (1671-1750)

Allegro e non Presto





## Adagio



## Allegro



39

Solo

Tutti

46

54

61

68

78

85

92

3

Detailed description: This page contains the cello part for measures 39 through 92 of the second concerto by Tomaso Albinoni. The music is written in bass clef with a key signature of one flat (B-flat). The piece begins at measure 39, which is marked 'Solo'. The tempo and dynamics change to 'Tutti' at measure 45. The score consists of eight staves of music. Measure 68 features a triplet of eighth notes. The piece concludes with a double bar line at the end of measure 92.